

Helu 6821
Kuheleloa
Makapeapea, Kaunolu
Native Register 6:425

Part of group claim under Pakele et al. See Helu 6814.

Helu 6821
Kuheleloa
Kaaapela & Makapeapea, Kaunolu
Native Testimony 13:270

fula 11. 1857
6821. Kuheleloa.
Kawaihoa... Kōhōkiki... Ma ike au i kama Ahana aina ma ka ili o
"Kaaapela" a me "Makapeapea" Ahupuaa o Kaunolu Lanai
1 Moo uala & Moku mauu & Pahale. Penei na fulua.
Mauka aina o Kamakahiki. Kamaiki aina o Kanohokahi.
Makai aina o Konohiki. Kaena Ahupuaa "Kalulu".
Ma lāua ia ia keia Ahana aina ma kama mauu Makua mai
i ka wa o Poki, mamua aku o ka M. 24. 1829 a ua māu kōia māu aona
& hiki i keia manawa, aole ma keia.
Kaiwi Kōhōkiki... Ma ike au ma lāua a faa māu ma fula i kōia ike.

Kawaihoa, Sworn. I know his Parcel of land in the ili of "Kaaapela" and "Makapeapea," Ahupuaa of Kaunolu, Lanai.

1 Moo uala (sweet potato section) & moku mauu (grass land/pasture section) & Pahale (house lot). The boundaries are thus.

Mauka, land of Kamakahiki. Kamaiki, land of Kanohokahi. Makai, land of Konohiki. Kaena, Ahupuaa of "Kalulu."

He received this Parcel of land from his Parents in the time of Poki, before the year 1829, and has always lived there to this time. No one has objected.

Kaiwi, Sworn. All the words above are true, that is my knowledge.

Royal Patent No. 6424
 Kuheleloa
 Makapeapea, Kaunolu, Lanai
 Book 24:219-220

HELU 6424



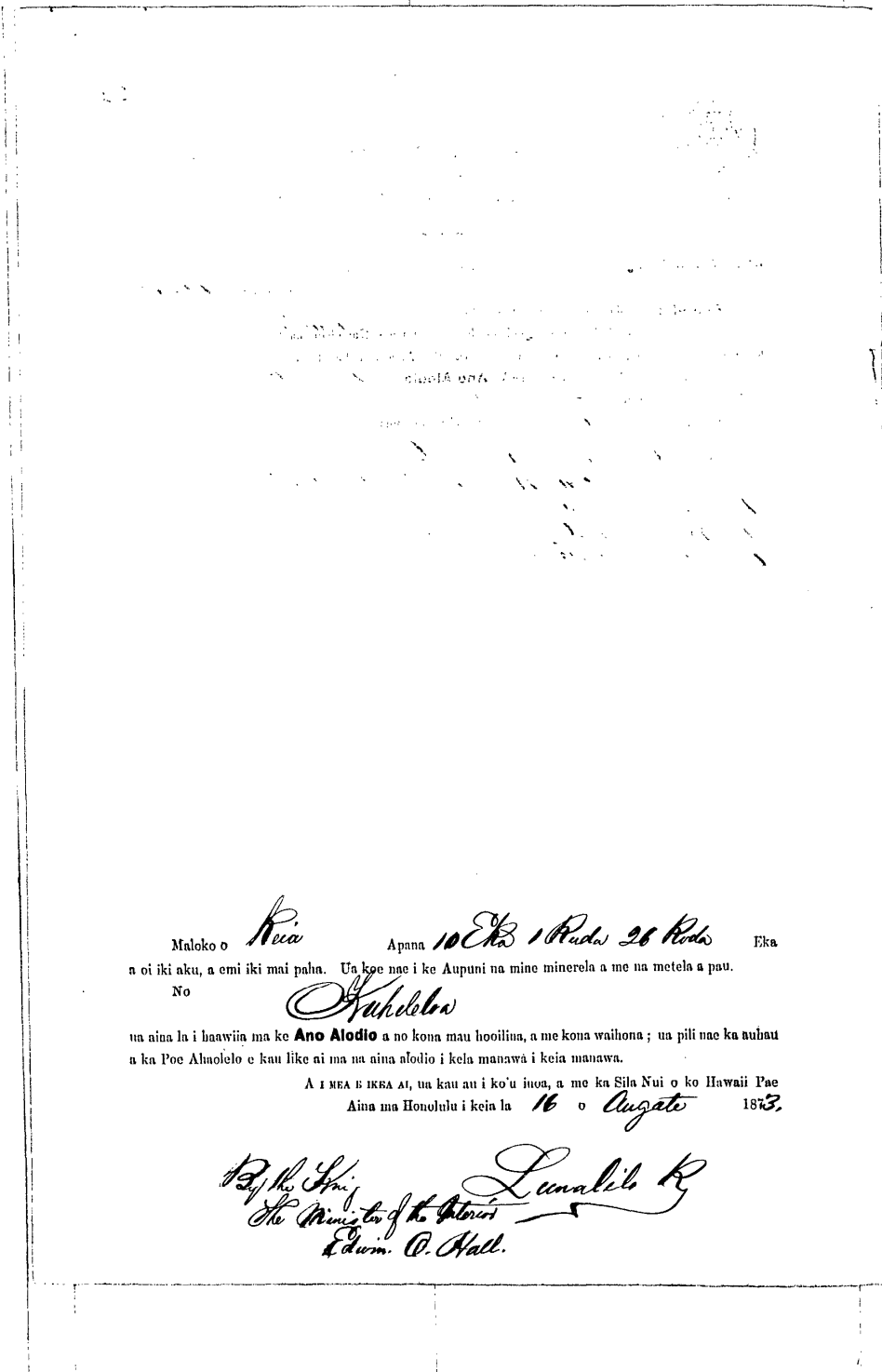
PALAPALA SILA NUI

A KE ALII, MAMULI O KA OLELO A KA POE HOONA KULEANA.

NO KA MEA, Ua hooiho na Luna Hoona i na kumu kuleana aina i ka olelo, he kuleana oiaio ko
Kuheleloa Kuleana Helu 6424.
 ma ke **Ano Aiodio** iloko o kahi i oleloia malalo.

Nolaila, ma keia Palapala Sila Nui, ke hoike aku nei o ~~Kuheleloa~~ *Lanai*, ke Alii Nui a ke Akua i
 Kona lokomikahi i hoonoho ai maluna o ko Hawaii Pae Aina, i na kumu a ma, i keia la nona iho, a no
 kona mau hope alii, ua haawi aku oia, ma ke **Ano Aiodio** *Kuheleloa*
 i kela wahi a pau loa ma *Ua o Makapeapea Kaunolu*
 ma ka Mokupuni o *Lanai* penei na mokuna:

O heomaka, ma ke kahi Niki a e holo ana
Oku 12 1/2 He 10.88 He pahi ma Hanohi
He 20 " 9.04 " "
He 64 1/2 He 10.26 " " kiki i kahi i heomaka.
Oku 21 1/2 " 10.54 " "
O kama iho 10. Eka. 1 Paha 26 Paha.



Maloko o *Kiia* Apana *10 Eka 1 Puda 26 Puda* Eka
 n oi iki aku, a emi iki mai paha. Ua koe nae i ke Aupuni na mine minerela a me na metela a pau.
 No

Kukuleloa

ua aina la i haawiia ma ke **Ano Alodio** a no kona mau hoouluu, a me kona waihoua; ua pili nae ka aubau
 a ka Poe Ahuolelo e kau like ai ma na aina alodio i kela manawa i keia manawa.

A I MEA E IKKA AI, ua kau au i ko'u inoa, a me ka Sila Nui o ko Hawaii Pae
 Aina ma Honolulu i keia la *16 o Augate* 18*73*.

Edw. O. Hall
 The Minister of the Interior
Lunalilo K.