

DECEMBER 1949

Pine Parade

Published monthly by the employees of the HAWAIIAN PINEAPPLE COMPANY, LTD.



Lānaʻi Culture &
Heritage Center

Pine Parade



DECEMBER
1949

**PUBLISHED MONTHLY BY THE EMPLOYEES OF
THE HAWAIIAN PINEAPPLE COMPANY**

HONOLULU.....ADRIAN DE MELLO
LANAI.....MASASHI TSUMURA
WAHIAWA.....J. W. OLDENKAMP

Staff Photographers, W. M. Pitchford
Mitsuo Hidano

LANAI:
Roy Ito, Damaso Juan, Alfred Kimokeo, Kenneth Matsumoto,
Wilfred Nogami, Carol Nunotani, Toshio Onuma, Charlotte Osako,
Julian Ruidas, Harry Sakoda, Larry Sensano, Amy Tamanaka, Betsy
Uchikata, Loretta Wong, Susie Yamoto.

WAHIAWA:
Pedro Abulon, Victor Aoki, David Cabingabang, Alde Herrera, Nora
Matsunaga, Ethel Mende, Ethel Miura, George Nacnac, Clara Nakata,
Ethel Tanada, Jean Teranishi, Ruth Yamada, Trixie Yokoo, Vivian
Ameniya

HONOLULU:
Julia Ahia, Nellie Akana, Ethel Akiyama, Alice Bright, Lily
Castro, Max Fontes, Elsie Fukushima, Peter Garcia, Myrtle Goto,
Albert Joseph, Nick Kawabata, Umeyo Kaya, Peter Kim, Rebecca
Kim, Hitoshi Kono, Katherine Leong, Amy Momoki, Lynette
Monji, Logan Ng, Edith Ono, Richard Shinozuka, John Silva, Yukio
Tanaka, Ed. Tokushige, Frances Yahiku, Gladys Yamada, Leness
Yamada, Gladys Yoshimura, Alexander Young.

ON THE COVER

Bright smile is Sharon Suwa's greeting to the cameraman after winning the "Cutest Baby" contest and the grand prize trophy of a little rubber lamb at the Wahiawa Annual Picnic held recently at Palama Beach. She is the daughter of Mr. and Mrs. Francis Toshiji Suwa. Her daddy is a leading IBM machine operator.



Lanai Culture & Heritage Center

COMING EVENTS

WAHIAWA:

Lauhala Classes, 9:00 to 11:00 a.m. every
Thursday through December, Hale
Koa Recreation Center,
starting.....December 1
Pine City Toastmasters' Club Meeting,
Kemoo Farm, 6:30 p.m. December 14
Wahiawa Community Assoc. Monthly
Meeting, Community Assoc. Bldg.,
7:30 p.m.December 15
Blood Bank Reserve Donations (Watch
Bulletin Boards for Schedule)
Volleyball Tournament, Inter - Dept.
(Watch Bulletin Boards for Schedule)

LANAI:

Lanai High Service Sorority Benefit
Dance.....December 3
Lions' Club Directors'
Meeting.....December 5
I.L.W.U. General Meeting...December 6
Lions' Club Monthly
Meeting.....December 8
Inter-Island Boxing, L.F.Y.O.
vs. Maui Pine.....December 9
Filipino Women's Club
Benefit.....December 10
First Annual Lanai Boy Scouts
Camporee.....December 10
Lanai High School Christmas
Program at the Gym....December 15
Annual Hapco Christmas party
at the Gym.....December 16
Inter-Island Basketball — Lanai High
School vs. Pahala High School
(Hawaii).....December 19
Lanai Teen Town Benefit

QUEEN OF WAHIAWA PINEAPPLE FESTIVAL and Pageant was Remedus Laborado, Hawaiian Pine's candidate for the honor. She is the daughter of Diego Laborado, Land Preparation Dept. She won \$100 cash and a gold bracelet as the first prize. More photos of the Queen at the Pageant, and other Pineapple Festival activities will be in your Christmas Issue of PINE PARADE.

YOUR SOCIAL SECURITY

Easy Way to Check Social Security Earnings

Employees who are covered by Social Security pay one percent of their wages or salary until they have received three thousand dollars for that year.

The amount taken out of your pay is matched by an equal payment by the company.

If you wish to find out the amount on which you have paid Social Security tax, you may send a penny postcard request form to the Social Security Board in Baltimore, Maryland. You can get a card at your Personnel Office (Form OAR-7004).

It is to your best interest to check your

Dance.....December 24
Lanai Filipino Youth Organization
New Year's Eve Dance...December 31

HONOLULU:

Annual Hapco Christmas Dinner at the
Cannery cafeteria.....December 23

account now, because if an error is found that is more than four years old, it will be too late to correct it. If you find a mistake, you should get in touch with your local Social Security Office and they will give you further help and advice.

Many people keep account of their yearly earnings on which they have paid Social Security tax. Then, by sending in a card at least each three years they can make sure that the proper earnings are being credited by the Board, and have time within the four year limit to have errors corrected.

The Social Security Board will answer your request in a sealed envelope so the information will be kept confidential. The amounts on which you paid taxes for 1946 and earlier will be in one lump sum. The figures for 1947, 1948 and 1949 to date will be listed separately. The figure sent to you will be only the amount on which you have paid Social Security tax.

Your Board is ready to help you at all times, and representatives from the Social Security Administration offices visit Wahiawa and Lanai City regularly.



LAWRENCE T. MATSUMOTO, formerly Honolulu Senior Storeroom clerk, has been promoted to Assistant Storekeeper-Office, Lanai Division. He will aid with storeroom office administration. A graduate of St. Louis College, Mr. Matsumoto has been with the company since July, 1947, starting as a cook in the Honolulu cafeteria and becoming, successively, clerk in the Purchasing Department, and Senior Storeroom Clerk.

Major Changes In Plantation Organization

Major changes in the management organization of the Wahiawa and Lanai plantations became effective on November 16.

The changes were made in the interest of greater efficiency, and result from careful study of organization at both plantations.

At both Lanai and Wahiawa the Land Preparation and Planting Departments were combined into single departments, since these operations are closely related.

At Wahiawa, harvesting and transportation were combined into one department.

On Lanai, where harvesting and transportation had been under one department, harbor operations, which are part of the transportation job, were added to the harvesting and transportation department.

Also a new Utilities Department, reporting directly to the Plantation Manager, was formed to provide services to Lanai City. All agricultural engineering work was assigned to an Agricultural Engineering Department.

At both plantations one level of supervision was removed by merging the former Assistant Foreman and Luna levels into one level—that of Job Foreman. All in all, about 65 men were affected.

Those whose jobs were eliminated were offered the next highest classifications available consistent with their length of service and skill.

Buy Christmas Seals



Help Stamp Out TB

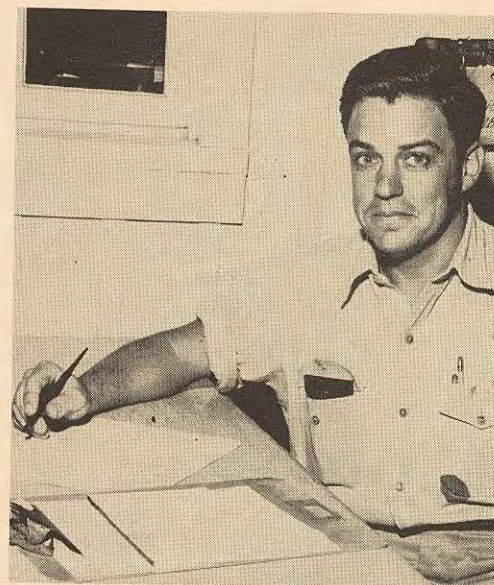
CHRISTMAS SEALS ARE A TRADITION

As much a part of Christmas as Santa Claus, bells, holly, and the spirit of giving are the gay little seals that are the sole support of the Tuberculosis Association of Hawaii. Used on holiday mail and gifts, they carry your message of Christmas cheer to your family and friends.

Christmas Seals help to give you free chest X-rays, and to prevent the spread of tuberculosis. They also provide rehabilitation training to return former tuberculosis patients to active community life. These little penny-apiece seals do a tremendous job!

Christmas Seals purchased the mobile X-ray unit which is used not only on Oahu but also on other islands, including Lanai, and because of it, many Hawaiian Pine employees have had the opportunity to have free chest X-rays.

Persons who have not received a supply of seals through the mail may telephone the Tuberculosis Association (8588-8589), or may buy them at centrally located stations during December.



GEORGE L. BRENNER has been promoted to the position of Assistant Storekeeper-Material, Lanai Division, to assist with material and inventory control. Mr. Brenner was formerly Senior Freight Receiving clerk in the Honolulu storeroom. He joined Hapco in 1948.

Federal Wage-Hour Law Sets New Minimum Rates

Hawaiian Pine wages are well above the minimum hourly wage rates required by the amended Federal Wage and Hour Law.

The changes will go into effect January 25, 1950. Minimum wage rates for non-agricultural workers are set at 75 cents an hour. Agricultural workers are not covered by the federal law, but the Territorial Wage and Hour Law requires a minimum wage rate for agricultural workers of 40 cents an hour.

Hapco wage rates for both agricultural and non-agricultural workers range from \$1.01 an hour in Grade I to \$1.86 an hour in Grade XI for men, and \$.91 an hour in Grade I to \$1.32½ an hour in Grade VII for women.

Lāna'i Culture & Heritage Center

RECENTLY PROMOTED

PROMOTIONS OF HAPCO WAGE EMPLOYEES DURING OCTOBER, 1949

Name	From (Job Title)	Labor Gr.	To (Job Title)	Labor Gr.
HONOLULU				
Matsu Higa	Pressman	I	Utility Man	II
Shoji Uchida	Metalsmith Trainee	V	Metalsmith Trainee	VI
Edward Medeiros	Janitor	I	Utility Man	II
Inocencio Davalos	Janitor	I	Utility Man	II
Calvin Miyamoto	Electrician 2/c	V	Electrician 1/c	VI
Shigeo Hattori	Mechanic Trainee	IV	Mechanic Trainee	V
Zentei Kaneshiro	Mechanic Trainee	IV	Mechanic Trainee	V
WAHIAWA				
(NONE)				
LANAI				
Yasuo Shimizu	Rod and Chainman	I	Truck Driver 2/c	IV
Seiji Gima	Truck Driver Trainee	III	Tracer	III
Kiyoshi Fujiyoshi	Automotive Mechanic Helper	II	Automotive Mechanic Trainee	III
Jack Zaan	Automotive Mechanic Helper	II	Automotive Mechanic Trainee	III
Kazu Shigaki	General Field Laborer	I	Truck Driver 2/c	IV



Lana'i Culture & Heritage Center

COMPLETE OVERHAUL of huge can coolers is made after peak canning season slacks off. One by one, each of the line of more than forty of these machines is taken apart, thoroughly cleaned of any rust and dirt, painted inside and out, and put back together again, ready for another year of use. Cleaning and checking of each cooler takes three men about fifteen days. This one will hold 556 cans at one time, and the largest has a capacity of 765. Tadao Tukuda, left, Wah But Shun, standing on the tank, and Segundo Rodolfo, right, check carefully to avoid costly breakdowns during the next season.

RECREATION



CHINESE COOKING CLASS at Wahiawa. L. to r., Ellen Fujinaka, Mrs. Tomoe Matsu-miya, Mrs. Frank Tyau, instructor, Ethel Miura, Trixie Yokoo. Members not in photo, Ethel Yoshida, Ruth Yamada, Joyce Matsuo.



BIG CATCH of Ulua (9-lb. and 27-lb.) made recently by Toshimi Yamashiro, Double Seamer Dept.



LEADER in Lanai 14 Club Fishing Con- test is Patrick Esclito, Sr., Field Maint. Dept., with 42-lb. Ulua.



JULIAN SAMORO, Hon. Machine Shop, left, and **SEVERO GULLEBAN**, Masonry Dept., right, were lucky fishermen.



TROPHY WINNER Emigdio Jamero, Har- vesting Dept., won Lanai Golfers' Assoc. October tournament.



TOURIST Peter Garcia, Hon. Machine Shop, visited Coolidge Dam in Arizona during mainland trip.



SENSATION at Wahiawa's Annual Picnic was "Candy" Omalza with his "Ink Spots" style of singing.



FISHERMAN'S DREAM is a fish like this 55- lb. Ulua caught by Toraki Matsunaga, Wahiawa Engineering Dept.

Lāna'i Culture & Heritage Center

HAPCO JOINS ALOHA WEEK FESTIVITIES



WINS AWARD. Hapco float colorfully decorated with green and golden yellow received award for Manufacturers' group in third annual Aloha parade. Cannery guides Mildred Mau, Bernadette Akana and Becky Kim took part in the exhibit.



LANAI OFFICE. Front, D. Billings, W. Kelley, M. Ichiyama, M. Gima, J. Ruidas. Rear, K. S. Lee, M. Kurashige, H. Tsumura, S. Y. Choi, M. Niibu, R. Sakuma, B. Uchikata, K. Kawamura.



CASHIER'S DEPT. making up Cannery payroll. Back to, l. to r., E. Prestidge, A. Shimizu, G. Wong. Facing, K. Boyd, J. Kamimura, A. Shigematsu. Rear, L. Ching, H. Kuwata, D. Smythe.



HONOLULU I.B.M. gets into the spirit! Front, l. to r., R. Nojiri, J. Lee, E. Hee. Rear, F. Takaki, T. Oshiro, B. Hahn, A. Hirai, A. T. Chang, G. Ching, J. Char, J. Hirokane, Dick Bow, R. Lum.



ALOHA SPIRIT invades trimming and packing tables as gay Aloha shirts appear under fresh white aprons. Colorful note is added to operating day efficiency with Island prints.



Lānaʻi Culture & Heritage Center

NEW DAM ON LANAI. Shown above is the Kapano Gulch Dam under construction. It is located at the south end of Lanai City, and its purpose is for flood control. Men are working on the choke tube located at the base of the dam, which will be used to control the flow of the water after it is filled. The trench seen will be filled in later and tamped down to prevent seepage. Below is an air view of the recently completed dam. This is the third to be built, and after the construction of a smaller one, to be known as the Kapohaku Dam, the dam building project on Lanai will be completed. The entire program is company financed and company personnel are doing the construction work.



WAHIAWA HARVEST PICNIC



Lāna'i Culture & Heritage Center

FULL DAY of fun, food and frolic was enjoyed by more than two thousand at the Wahiawa Annual Picnic held at Palama Beach. **LOTS OF WEIGHT** was thrown into the tug-of-war shown above. **WINNER BY A NOSE** will be one of these ladies in the egg rolling contest, below left. L. to r., Mrs. W. Nunotani, Mrs. R. Dumancas, Mrs. D. Valparaiso, Clara Nakata, Mary Bridrijo, Mrs. R. Lastimado. **QUIET MOMENT** sipping his soda water during lunch is enjoyed by Matsutaro Kadoyama, retired, below right.





BOUNCING BABIES above, were entered in contest. Winner, Sharon Suwa, is shown with her mother, Mrs. Francis Toshiji Suwa, seated second from left. **PINEAPPLE FILIPINO HOUR** program was recorded, below left, with "Lucky Lucky," Mildred Tolentino and Clem Reyes, and a widely varied program of Hapco talent. Professional music was provided by Jules Afi. Three other orchestras of Hawaiian Pine employees and friends played throughout the day's activities. **COOL OCEAN DIP**, below right, was enjoyed by youngsters under watchful eye of three official lifeguards.

Lānaʻi Culture & Heritage Center



(More Photos on Page 10)



Lāna'i Culture & Heritage Center

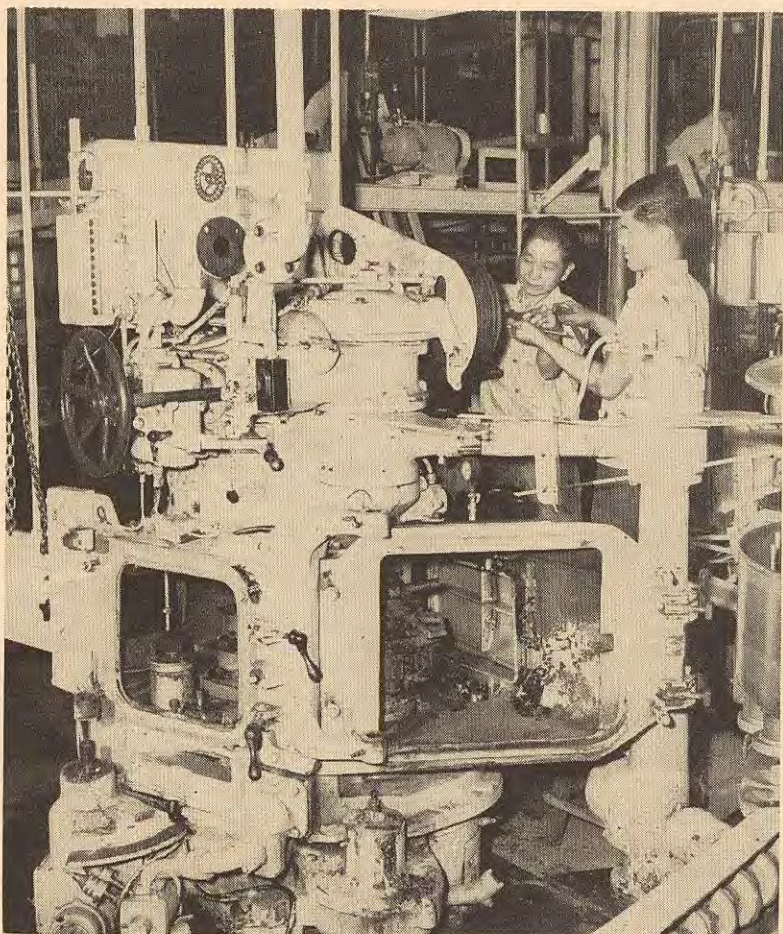
LET'S EAT! After a morning of sports and fun, appetites are ready for plenty of hot dogs, sandwiches and other good things. Here are three youngsters really entering into the spirit of the occasion. Bet they'll be back for seconds, too!



WHEN GOOD FELLOWS GET TOGETHER there's always plenty to talk and laugh about. Here is a group of fellow workers and neighbors taking a few moments out from the games and contests.



FAMILY PARTY gathers for lunch and a mid-day rest. Attention has to be divided between all the good things to eat and seeing that baby's lunch goes on the inside instead of the outside!



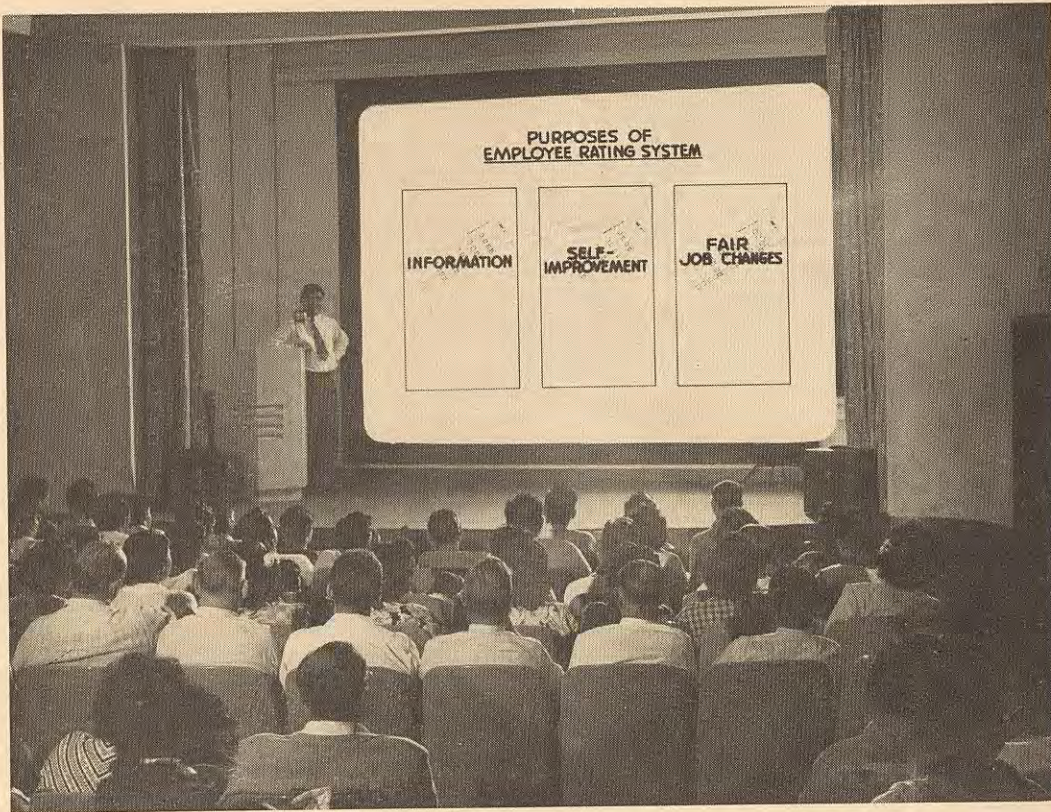
OFF SEASON REPAIRS on vacuum sealing machines. Here, K. Mizumoto, left, and Nick Arakaki adjust the clutch on one of the juice machines which, when operating, seals 172 cans per minute.

COMPLICATED MACHINERY Double seamer which must remain in top operation condition day and night during peak season is checked by K. Kono, left, K. Matsukado, center, and Clay Shinto.

Lana'i Culture & Heritage Center



FIELD WELDING UNIT at Wahiawa. Shosaku Kimura, Leading Maint. Constr. Mech., Engineering Dept., is shown here using a cutting torch to prepare a piece of steel for use on the plantation's experimental trash sweep plow. This unit carries equipment to repair machinery in the field which otherwise would have to be taken into the shop.



MEETINGS to explain the company's improved employee rating plan for wage employees were held at the cannery and on the plantations. Above, a group of Honolulu employees heard James Kau, Warehouse I.B.M. Dept., explain details of the plan. Top right, informational talks were held in the fields on Lanai. Speakers were Fausto Dumling, Eugene Eugenio and Francisco Burgos. Above right, Vicente Castillo assisted Apolonio Soriano present a session in Ilocano to employees in a field at Wahiawa.

SUGGESTION AWARDS WINNERS

Again this month we have employees whose previous suggestions have benefited them through cash awards, and the company through improved operating methods and employment conditions.

JITSUO KIDA, of the Syruping-Double Seamer Dept., a previous winner, suggested roughening the tops of the can cover jacks, and also, lengthening the catch on the hydraulic release lever.

JAMES A. HANNA, Ion Exchange Dept., winner of several previous awards, suggested installing time delay relays in electric circuits to reduce the possibility of "air lock" in Ion Exchange Plant brine and acid pumps.

WALTER C. LEE, a seasonal employee in the Storage Dept., was rewarded for his suggestion to number the cooker cooler lines so they may be readily identified

from the tray stacker side.

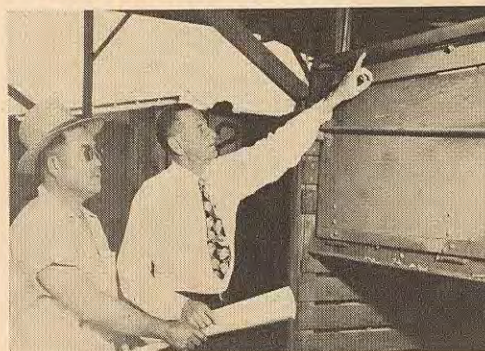
WALTER SHINYAMA, Container Plant, a newcomer to the list, suggested a spare set of "holding arms" for the Quad ma-



Gary Hiraiwa

chine to be available when the working set becomes bent or twisted as a result of a heavy jam in the machine.

GARY HIRAIWA Transportation Dept.,



Harry Inouye, Frank D. Gibson

won two awards for his suggestions for more convenient working conditions in his area.

HARRY INOUE, Bulk Bin Dept., another repeat winner, this month received an award for his suggestion which will protect the wooden lining of the bulk bins from damage. He also shared a second award with **FRANK D. GIBSON**, regarding the use of a shorter wood piece in the bulk box front gate to save labor and materials when making repairs.



Frank Hijii

FRANK HIJII, Container Plant, made a Safety suggestion which won him cash. It was regarding the installation of a horn on the 5-ton electric crane in the Corrugating Plant to warn of the approach of the crane and paper rolls.



Walter Shinyama



RECREATION AND COMPANIONSHIP are found at Lanai's pool hall. Recently completed, and well equipped, it is a favorite gathering place for beginners and experts after a day's work.



GIANT DAHLIAS bloom in the outstanding garden of Mrs. Patrick Esclito. She is shown here in her flower garden with two of her prize blooms. Admiring the flowers also is her daughter Mildred.



Lāna'i Culture & Heritage Center

ALL-LANAI SHOGI TOURNAMENT players are deep in concentration on the Community Welfare Association. Winner of the "A" Section, and also the center. He is a Truck Driver in the Harvesting Dept. "B" Section Champ



HOME GARDEN to supplement vegetable needs is project of Nita, Frank, Jr., and Herald Soriano, front, and rear, left to right, Leon Cabrera, Tommy Cabico and Catalino Cabanting.



AJA DANCE AT GYM raised funds for Club's athletic program. Music for the dance was furnished by the Hart's orchestra from Maui. General Chairman for the occasion was Noboru Oyama.

WAHIAWA



5-H CLUB organized recently for older girls wishing to continue 4-H work. L. to r., Nora Handa, Violet Kato, Ellen Matsumoto, Colleen Collins, U. of Hawaii, Clara Nakata, Emiko Sawai.



STUDENT CABINET instills civic pride. Here are, front, J. Kato, M. Shinjo, R. Mehio, E. Hirasa. Center, F. Agena, M. Hirasa, M. Suboc, J. Jumawan. Standing, J. Kakanui, J. Limbaga.



SIXTEEN FILIPINOS returned to Philippines aboard the S. S. General Gordon recently. They were given a fine send-off by their friends, and were honored at the Wahiawa Annual Picnic.



WEDDING CEREMONY of Dolores Canencia to Alfredo Esmeralda, Experiment Dept., was held at the Full Gospel Church, Honolulu. Here are Mr. and Mrs. Esmeralda and flower girl, Arlene Herrera.

Lana'i Culture & Heritage Center



RECENTLY. The former Kay of the Mail Room became the Thomas Kouke on Sept. 10.



MR. AND MRS. PHILIP KIM after their wedding ceremony. Mrs. Kim was formerly Doris Kalekini, Ginaca Dept.



NEW VOICE you hear when calling Car Service belongs to Beatrice Peters. She is acting as Messenger Driver Dispatcher during Flora Ichishita's absence on leave.



ALOHA to Abel Rodrigues as he leaves on first mainland trip in eleven years to visit his son, daughter and grandchildren. Presenting leis are Marion Jones, left, and Edna Scott.

MILESTONES

WEDDINGS

Honolulu:

Miss Hattie Whitney, to Leslie Machado, Container Plant, October 15.

Miss Jean Ikejiri, Cashier's Dept., to Torao Shindo, October 30.

Miss Masae Minamoto, to Tadao Yoshida, Container Plant, November 12.

Miss Evelyn Yap, Insurance Dept., to Julian Nelson, Mechanical Experimental Dept., November 12.

Wahiawa:

BIRTHS

To Mr. and Mrs. Vernon Dang, a daughter, Lorna Jean, October 18.

To Mr. and Mrs. Jack Adams, a daughter, Deborah Elon, October 26.

To Mr. and Mrs. Allen Klingman, a daughter, Katherine Marie, November 5.

To Mr. and Mrs. Logan Hazen, a son, Logan Hazen, III, November 13.

Honolulu:

To Mr. and Mrs. Donald Smythe, a son, Donald, November 12.

Lanai:

To Mr. and Mrs. Honorio Collado, a son, Robin Eric, October 20.

To Mr. and Mrs. Emilio Turqueza, a son, Fred, October 29.

To Mr. and Mrs. Alfred Agaran, a daughter, Fay, November 3.

To Mr. and Mrs. Prisco Masocol, a son, Prisco Frank, November 8.

To Mr. and Mrs. Midori Oda, a daughter, Helen Sanae, November 8.

BAPTISMS

Lanai:

Diane Lapaz, daughter of Mr. and Mrs. Juanito Preza, at Lanai Catholic Church, November 6.

Brenda Winona, daughter of Mr. and Mrs. Constancio Baptista, at Lanai Catholic Church, November 13.

NEW CITIZENS

The following from Wahiawa received their American citizenship papers in October:

Mrs. Dolores Abangan
Epifanio Cervantes
Monico Maglasang
Bruno Orosco

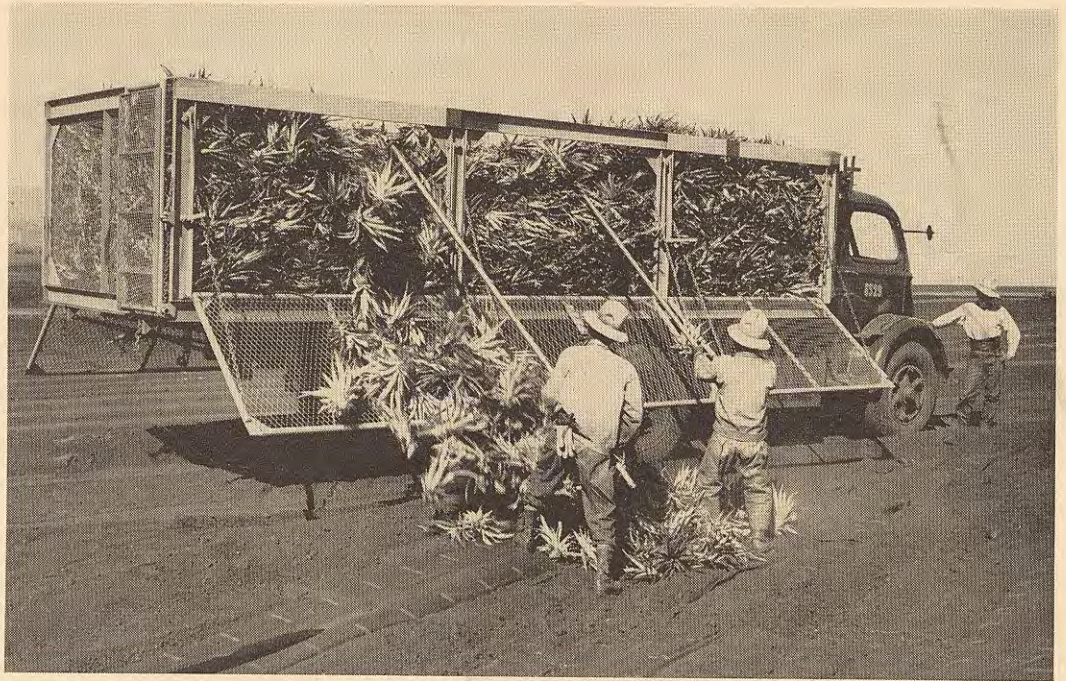
Auto Owners And Drivers Affected By New T. H. Law

A new territorial law affecting automobile drivers and owners will go into effect on January 1, 1950. It is called the motor vehicle safety responsibility law.

Under the new law an automobile accident that causes death or injury to a person, or property damage of \$100 or more, must be reported to the Chief of Police within 24 hours. You must report the accident if you own the car or if you are driving it, whether or not the accident is your fault.

Failure to report the accident can be punished by a fine of up to \$1,000, or imprisonment up to one year, or both, and by suspension of license.

Also, you must give proof to the police



NEW TYPE of all-metal slip bin with hinged sides permits loading of slips in the field with the mechanical harvester. The loaded bin is driven to the planting area, the side gates let down, and the slips unloaded where they are wanted. Here are Vicente Rosario, left, P. Calderon, right, and "Candy" Omalza, truck driver, all of Wahiawa.

that you are able to settle any claims up to \$11,000. This must be done within 60 days after the accident.

If at the time of the accident you have public liability insurance that meets the law's requirements, you must still notify the police of the accident.

The liability insurance must be written by a licensed insurance company. Also, it must cover you for at least \$1,000 property damage, \$5,000 for injuries to one person, and \$10,000 for all personal injuries in any one accident.

Pamphlets explaining the new law have been distributed to Hawaiian Pine employees. If you did not receive your copy, or wish further information, please get in touch with the Personnel Department.

CONGRATULATIONS

20 Years

December

Andres Gonsales, Wahiawa	3
Katsuji Kishimi, Wahiawa	3
Renta Sakane, Lanai	5
William A. Weber, Wahiawa	9
Ryosho Kuba, Wahiawa	14

15 Years

Shujitsu Nishihira, Lanai	6
Austin N. Turner, Wahiawa	19
Lee Pong Yong, Lanai	27

10 Years

Martin Fernandez, Lanai	12
-------------------------	----



THRILLING MOMENT when Kinuyo Tanaka, the Japanese "Bette Davis" paused during her tour of the cannery to give autographs to her admirers. Here are, left to right, Helen Murakami, Acctg. Dept.; Jean Garcia, Order Dept.; Gladys Yoshimura, Juice Dept.; Ethel Sakane, Order Dept.; Mildred Mishina, Storage Dept.; Miss Tanaka.



Lāna'i Culture & Heritage Center

STREET DANCING and a program of hulas and entertainment opened Lāna'i's first Aloha Week celebration.

Sec. 34.66, P. L. & R.
U. S. POSTAGE
PAID
Honolulu, Hawaii
Permit No. 115

CHIYOKO GIMA